



ONODI TOOL & ENGINEERING

Capabilities Brief

Onodi Tool & Engineering Co. Confidential and Proprietary
©2023



Onodi Tool and Engineering

"We do the Difficult" has been Onodi's calling card for over 50 years. The Company has used their strong engineering and manufacturing capabilities to develop and manufacture precision mechanical, hydraulic and pneumatic solutions for their partners in the defense and industrial markets

Precision Manufacturing ... Extraordinary Results

Onodi Tool & Engineering Co. Confidential and Proprietary

©2023

Overview

- For 50 years, Onodi Tool & Engineering has been partnering with leading and emerging companies to develop, design, manufacture, and assemble complex components and sub-components
 - Supporting the defense, aerospace, aviation, and industrial markets
 - Specializing in medium to high complex geometric machining and assemblies
 - Significant technical expertise in working complex material
 - Utilizing multi-axis CNC machines and simulation software
- The company provides customized program management, machining, fabrication, and secondary processing
- On August 1, 2020 – Founder John Onodi partnered with Covington Capital Partners.
 - Covington Capital Partners, as majority shareholder, provides growth capital strategic input, and governance
- Certified Small Business (under 50 employees)
- Headquartered in Melvindale, Michigan



Overview

Operations – Products - Markets

Operational Expertise

Precision Machining
Manufacturing, Fabrication, Assembly
Extended Range of Processes /
Services
Systems Integration
Program Management
Build-to-Print
MOTS and COTS Products



Product Expertise

Mechanical
Hydraulic
Pneumatic



Markets

Defense
Aerospace
Aviation
Industrial



Certifications



ISO 9001:2015 / AS9100D Certified
(Valid through 03/07/2027)

DD2345 Joint Certification: 0009626
(Valid through 8/31/2027)

DDTC Registered (ITAR Compliant): M-8739
(Valid through 5/31/2024; renewal underway)

Bureau of Alcohol, Tobacco, Firearms; Armed Export Control Act; **Registered Importer USMIL Sec 38; A-27-243-0613;**
valid through 6/13/2027

Certified Small Business
CAGE CODE: 4L516
DUNS: 068834092
UEID: EQK6ANC33QN9



Customer Data Protection

OTE Cyber Operations: currently working closely with several customers to facilitate secure interface

- Detail
 - Fully implemented NIST Control 3.5.3: Multi-Factor Authentication
 - Qualified for CDI/CUI shared through digital encryption
 - NIST 800-171 Rev 2 compliance (January 2024): 84%
 - Registered in Supplier Performance Risk System (SPRS)
 - POAM and System Security Plan (SSP) in place and being managed to achieve full compliance



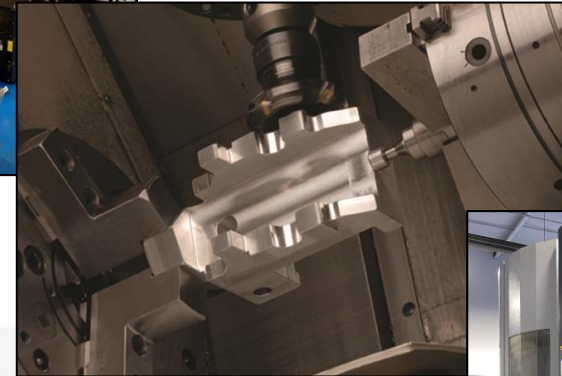
Other features of OTE Customer Data Protection:

- Strict control of customer proprietary data and prints
- No customer prints allowed on shop floor
- Multi-layered cyber security and endpoint data protection
- Proactive and passive intrusion defense measures utilize a fully managed file backup and recovery solution

Core Competencies

Precision Machining and Assembly

- Precision vertical and horizontal machining centers
- CNC 5-axis Multi-Tool Machining Centers
- CNC Turning Centers
- CNC Milling Centers
- CNC Grinding Centers
- Complete Assembly
- Heat Treat, Coating, Plating, Painting
- Packaging and Shipping
- CAD/CAM tools
- CMM Inspection Equipment
 - In-process Inspection and Traceability
- Rapid Prototyping
- Non-destructive Testing; First Article Testing
- 70,000 square feet of manufacturing floorspace

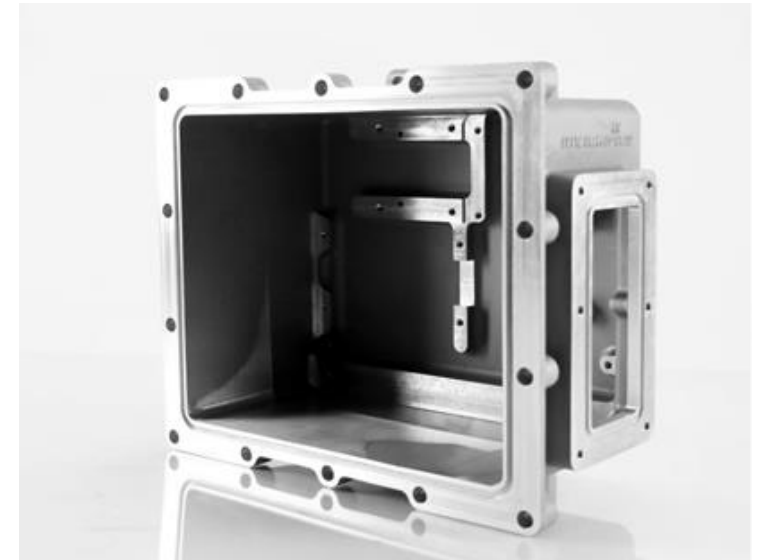
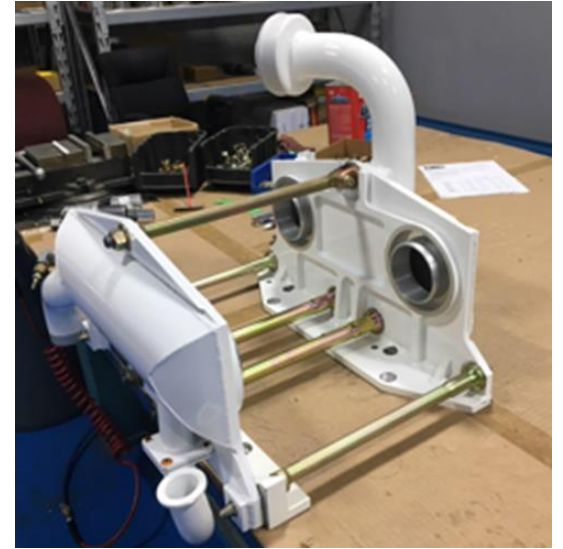


Also available:
Wire EDM
Fabrication
Welding (CWI Certified)
Additive Manufacturing

Differentiators

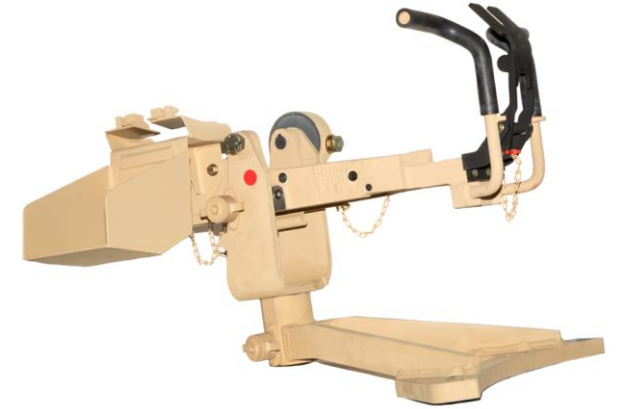
We are machinists, fabricators, assemblers, program managers and quality assurance experts

- Full spectrum state-of-the art CNC machining capability and capacity; ability to machine any complex shape and tight tolerance
- Expertise in all grades of steel, aluminum, stainless, titanium and specialty metals
- Machining of castings, forgings, weldments, and billets
- Certified product and process quality management system and equipment; expert risk management, verification, validation
- Fast lead time, rapid prototype, low volume, high mix manufacturing
- Expertise in emulation engineering
- Expert Configuration Management, Program Management, Project Planning, Project Management and Control
- Spares and Sustainment
- Specialized in Diminishing Manufacturing Sources and Material Shortages (DMSMS)
- Certified Repair & Overhaul facility for U.S. Army Ground Combat Systems
- Closely affiliated network of over 50 suppliers



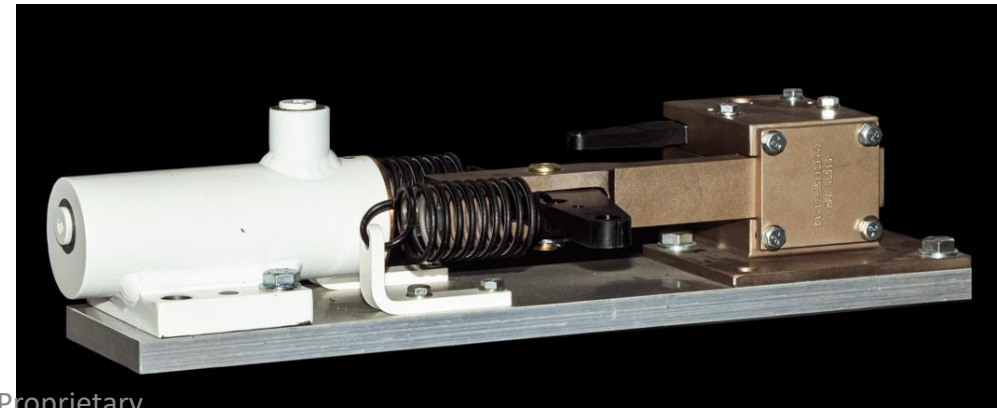
A highly qualified and efficient team provides the expertise

- OTE applies its knowledge of engineering and manufacturing to smooth the transition from design to full-scale production in various quantities and batch sizes
- The company provides transition services for products developed externally and internally
- Our Program Management team uses proven processes
- Manufacturing Readiness Review – to reduce turnaround time and eliminate unnecessary costs. Our capabilities include:
 - Design for manufacturability
 - Manufacturing optimization
 - CNC simulation software
 - Statistical Process Controls
 - Concurrent engineering



Full life cycle management of subsystems and components

- OTE provides customers with streamlined, customized, cost-saving solutions for complex manufacturing projects
- Whether systems have just completed the design phase or have been in production elsewhere, we assume responsibility for the entire manufacturing process
- OTE's lean manufacturing practices provide:
 - Increased customer flexibility and greater responsiveness
 - Lower costs and more efficient inventory turns
 - Real-time identification and resolution of component and production challenges
- OTE's value added services include:
 - Complex assembly and test
 - Supply chain management
 - Sustainment and spares



Machinery - Materials - Processes

Wide variety of part size, materials and extended ranges of processes

<p><u>CNC Machinery: Mills</u> CNC 3-4 Axis Milling and Contouring CNC Vertical Milling and Contouring CNC Horizontal Milling and Contouring CNC Horizontal with Eight (8) Pallet Changer</p>	<p><u>Mill Work Envelope</u> X = Up to 78.7" (1,998mm) Y = Up to 43.3" (1,099mm) Z = Up to 31.5" (800mm)</p>
---	---

<p><u>CNC Turning: Lathes</u> 5-Axis Horizontal Lathe Twin Spindle Lathe CNC Turning</p>	<p><u>Lathe Work Envelope</u> Chuck = Up to 10.0" (254mm) Swing = Up to 33" (383mm) Bed = Up to 60.0" (1,524mm)</p>
---	--

<p style="text-align: center;"><u>Material</u></p> <p><u>Castings:</u> Aluminum, Stainless Steel, Magnesium, High Nickel</p> <p><u>Bar Stock:</u> Wrought Alloy, Stainless Steel, Special Alloys, Precious Metals, Copper, Titanium-based Alloys, Inconel, High Nickel</p> <p><u>Forgings:</u> Inconel, Stainless Steel, Special Alloys, Titanium-based Alloys, High Nickel</p>
<p style="text-align: center;"><u>Available Processes</u></p> <p>Heat Treat, Coatings, Plating, Painting, EDM, Grinding, Gun Drilling</p>



State-of-the-Art Quality Assurance Equipment and Highly Qualified Technicians

- OTE produces world-class components by employing an integrated manufacturing and quality management system
- Our quality system includes step-by-step visual instructions supported with embedded quality assurance processes for consistently reliable quality and workmanship
- Our robust Quality Management System (QMS) ensures compliance with:
 - ISO 9001:2015
 - AS9100D certified



Equipment:

- Mitutoyo CMM (Manual)
- DEA CMM (PC-DMIS)
- Keyence Mobile CMM
- Brown & Sharp One (PC-DMIS)
- Starrett Measuring Tools
- Optical Comparator
- Hydraulic Test Lab
- **Material Properties Test Lab**

Strategic Partnerships

A growing list of long-standing and new customers serving defense, aerospace, aviation and industrial markets





ONODI TOOL & ENGINEERING

Example Programs and Products

Precision parts, sub-systems, and complex assemblies to support each of these programs



M1A1 Abrams



Armored Multi-Purpose Vehicle (AMPV)



M88 Hercules



Bradley A4



M109A7 PIM (Paladin Integrated Management)



Multiple Launch Rocket System (MLRS)



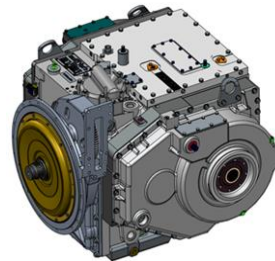
HMMWV



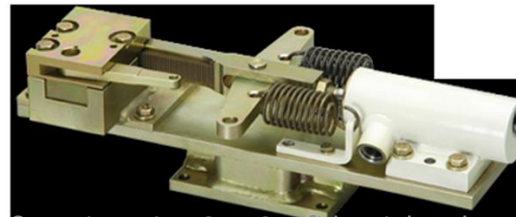
Stryker Family of Vehicles



ADVS 1790 Family of Engines



HMPT 500/800 Transmission



Onodi Tool & Engineering Co. Confidential and Proprietary

©2023

Memberships and Affiliations





**For Further Information
Please Contact**

E-Mail: Sales@onoditool.com
(313) 386-6682

www.OnodiTool.com

19150 Meginnity Ave. Melvindale, Michigan 48122